

Product details: FERROS 3D 1200 x 1200 x 200
octagonal with rotary table SPARTUS® RT1000

nov-Weld

product code: SP28C-12-12-RT1000



Completion date to be agreed with the sales manager

Product variants

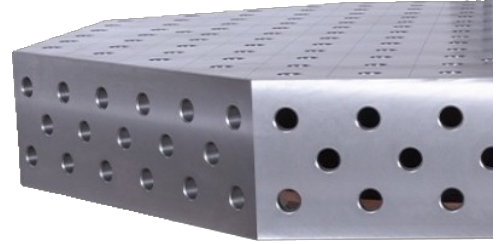
Index	Price
FERROS 3D 1200 x 1200 x 200 octagonal with rotary table SPARTUS® RT1000 SP28C-12-12-RT1000	€8,329.43 / pc Net price
FERROS 3D 1200 x 1200 x 200 octagonal with rotary table SPARTUS® RT2000 SP28C-12-12-RT2000	€10,412.53 / pc Net price
FERROS 3D 1200 x 1200 x 200 octagonal with rotary table SPARTUS® RT3000 SP28C-12-12-RT3000	€12,346.84 / pc Net price
FERROS 3D 1200 x 1200 x 200 octagonal with rotary table SPARTUS® RT5000 SP28C-12-12-RT5000	€14,132.35 / pc Net price

Product description

INCREASE WORK EFFICIENCY THANKS TO MODERN SOLUTIONS!

FERROS

1200 x 1200 x 200mm (octagonal)



- **CAST IRON ENGJL-300**

For the casting of the countertop, high-strength cast iron EN-GJL-300 was used, which is characterized by high wear resistance.

- **TABLE TOP 25MM**

The table top with a thickness of 25 mm guarantees the durability of the table and resistance to mechanical damage.

- **MILLIMETRIC SCALE**

The applied millimeter scale facilitates precise installation of the element during processing.

- **3D SIDE**

It allows to expand the working surface and joining the table tops.

- **D28 SYSTEM**

Drilled and chamfered holes 28mm.

SPARTUS® ROTARY TABLES with a countertop size of 1200 x 1200 x 200.



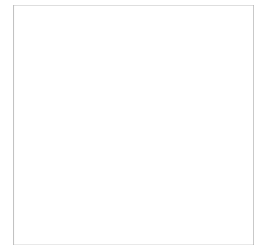
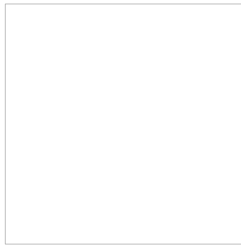
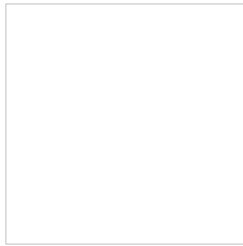
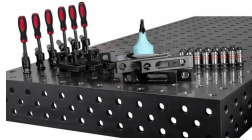
The SPARTUS® rotary tables have been specially designed to work in a vertical position. Adjustable start at smooth rotation with smooth braking is due to the use of the highest class inverter-controlled motors. The compact and compact design of the device provides good access to the workpiece, allowing for precise and comfortable work.

Control interface: manual control panel + foot switch (on separate wires).

Advantages:

- inverter-based motor control
- control pendant for work control
- foot switch
- safety button

ACCESSORY SETS



Accessories SET 1 includes:

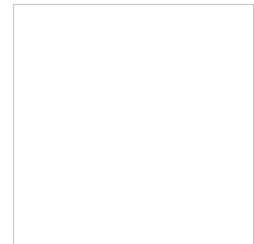
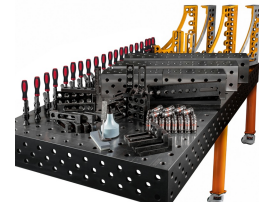
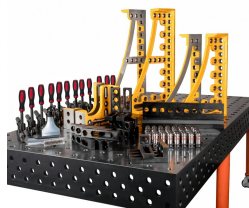
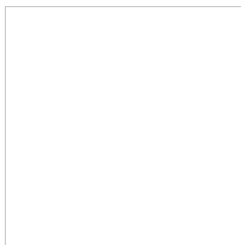
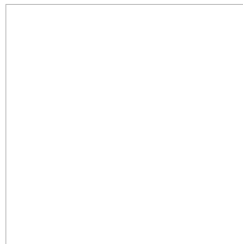
- SP010-30-005 Angle Bracket 175x50x75mm hole/slot 8pcs
- SP010-50-002 Universal stopper 225x50x25mm 4 pcs
- SP010-70-001 180° mounting clamp with 300x300mm holder 6 pcs
- SP010-60-001 Rapid locking bolt fi 28x50mm 22 pcs
- SP010-90-003A Hexagon allen wrench 150mm 1 pc.
- SP010-90-004 Nylon brusch fi 30x80mm 1 pc.
- SP010-90-001 Oilstone 200x50x25mm 1 pc.
- SP010-90-002 1l dispencer bottle 1 pc.

Accessories SET 2 includes:

- SP010-30-002 Angle bracket 175x50x175mm hole/slot 6 pcs
- SP010-30-005 Angle bracket 175x50x75mm hole/slot 2 pcs
- SP010-50-002 Universal stopper 225x50x25mm 4 pcs
- SP010-70-001 180° mounting clamp with 300x300mm holder 8 pcs
- SP010-60-001 Rapid locking bolt fi 28x50mm 20 pcs
- SP010-90-003A Hexagon allen wrench 150mm 1 pc.
- SP010-90-004 Nylon brusch fi 30x80mm 1 pc.
- SP010-90-001 Olistone 200x50x25mm 1 pc.
- SP010-90-002 1l dispencer bottle 1 pc.

Accessories SET 3 includes:

- SP010-23-300L Angle bracket 275x100x300mm left 1 pc.
- SP010-23-300R Angle bracket 275x100x300mm right 1 pc.
- SP010-23-600L Angle bracket 375x100x600mm left 1 pc.
- SP010-23-600R Angle bracket 375x100x600mm right 1 pc.
- SP010-30-002 Angle bracket 175x50x175mm hole/slot 4 pcs
- SP010-30-005 Angle bracket 175x50x75mm hole/slot 4 pcs
- SP010-50-002 Universal stopper 225x50x25mm 6 pcs
- SP010-70-001 180° mounting clamp with 300x300mm holder 10 pcs
- SP010-60-001 Rapid locking bolt fi 28x50mm 22 pcs
- SP010-90-003A Hexagon allen wrench 150mm 1 pc.
- SP010-90-004 Nylon brush fi 30x80mm 1 pc.
- SP010-90-001 Oilstone 200x50x25mm 1 pc.
- SP010-90-002 1l dispencer bottle 1 pc.



Accessories SET 4 includes:

SP010-23-600L Angle bracket 375x100x600mm left 2 pcs
SP010-23-600R Angle bracket 375x100x600mm right 2 pcs
SP010-30-005 Angle bracket 175x50x75 hole/slot 4 pcs
SP010-30-013 Angle bracket 175x50x275mm hole/slot 6 pcs
SP010-50-002 Universal stopper 225x50x25mm 4 pcs
SP010-65-001A Prysm fi 60 90° 4 pcs
SP010-70-001 180° mounting clamp with 300x300mm holder
10 pcs
SP010-60-001 Rapid locking bolt fi 28x50mm 28 pcs
SP010-90-003A Hexagon allen wrench 150mm 1 pc.
SP010-90-004 Nylon bruschi fi 30x80mm 1 pc.
SP010-90-001 Oilstone 200x50x25mm 1 pc.
SP010-90-002 1l dispenser bottle 1 pc.

Accessories SET 5 includes:

SP010-23-300L Angle bracket 275x100x300mm left 1 pc.
SP010-23-300R Angle bracket 275x100x300mm right 1 pc.
SP010-23-600L Angle bracket 375x100x600mm left 1 pc.
SP010-23-600R Angle bracket 375x100x600mm right 1 pc.
SP010-23-800L Angle bracket 375x100x800mm left 1 pc.
SP010-23-800R Angle bracket 375x100x800mm right 1 pc.
SP010-30-002 Angle bracket 175x50x175mm hole/slot 6 pcs
SP010-30-005 Angle bracket 175x50x75 hole/slot 4 pcs
SP010-50-002 Universal stopper 225x50x25mm 6 pcs
SP010-50-014 Universal stop 500x100x25mm hole/slot 4 pcs
SP010-70-001 180° mounting clamp with 300x300mm holder
12 pcs
SP010-60-001 Rapid locking bolt fi 28x50mm 40 pcs
SP010-90-003A Hexagon allen wrench 150mm 1 pc.
SP010-90-004 Nylon bruschi fi 30x80mm 1 pc.
SP010-90-001 Oilstone 200x50x25mm 1 pc.
SP010-90-002 1l dispenser bottle 1 pc.

Accessories SET 6 includes:

SP010-20-050 U-shape block 500x200x200mm 2 pcs
SP010-20-100 U-shape block 1000x200x200mm 2 pcs
SP010-23-300L Angle bracket 275x100x300mm left 2 pcs
SP010-23-300R Angle bracket 275x100x300mm right 2 pcs
SP010-23-600L Angle bracket 375x100x600mm left 2 pcs
SP010-23-600R Angle bracket 375x100x600mm right 2 pcs
SP010-30-002 Angle bracket 175x50x175mm hole/slot 8 pcs
SP010-30-005 Angle bracket 175x50x75mm hole/slot 8 pcs
SP010-30-013 Angle bracket 175x50x275mm hole/slot 4 pcs
SP010-50-002 Universal stopper 225x50x25mm 8 pcs
SP010-50-014 Universal stop 500x100x25mm hole/slot 4 pcs
SP010-70-001 180° mounting clamp with 300x300mm
holder 20 pcs
SP010-60-001 Rapid locking bolt fi 28x50mm 46 pcs
SP010-90-003A Hexagon allen wrench 150mm 1 pc.
SP010-90-004 Nylon bruschi fi 30x80mm 1 pc.
SP010-90-001 Oilstone 200x50x25mm 1 pc.
SP010-90-002 1l dispenser bottle 1 pc.

Technical details

Size of the work surface	1200 x 1200 x 200mm
Made	casted
Material	EN-GJL-300 cast iron acc. to EN 1561
Table top thickness	25mm
Table horizontal precision	0.1/1000mm
Table vertical precision	0.1/200mm
Standard	D28 (drilled and milled holes 28mm diameter)
Carrying capacity	1000kg/rotary table
Supporting structure	Rotary table
Table top weight	480kg
Input	~3× 400V ± 10% 50 / 60 Hz