

Product details: SPARTUS® Easy 1500 laser welding machine with wire feeder

SPARTUS®

Raycus

product code: **LASER-EASY1500**
product ean: **5900391002056**



The set includes:

- laser source **Raycus**
- F230 handheld laser head (7m) with F150 focus lens
(as an option, there's the possibility to switch the F210 head)
- wire feeder with 1.2 - 1.6V fi37 rollers
- **cooling liquid 15l**
- 2x wire guide rollers 0.8 - 1.0V fi37
- insulated steel liner
- teflon liner
- set of single nozzles for the laser head
- 4 single wire feeder tips
- protective lenses

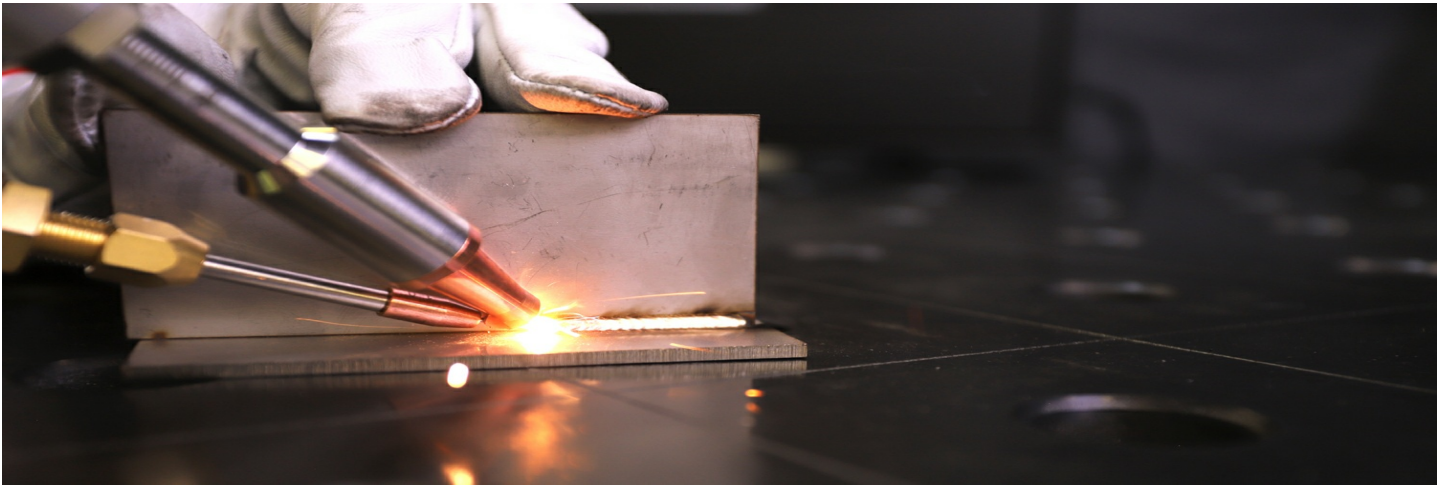
Product variants

Index	Price
SPARTUS® Easy 1500 laser welding machine with wire feeder LASER-EASY1500	€6,918.65 / pc Net price

Product description

SPARTUS® EASY 1500 - INNOVATIVE TECHNOLOGY FOR WELDING, CUTTING AND CLEANING MATERIALS

The **SPARTUS® Easy 1500 laser welder** is the key to achieving unparalleled quality in connections. This device surpasses traditional welding methods like MIG or TIG due to the exceptional precision it offers. The laser enables the creation of significantly smaller, microscopic-sized welds, thereby minimizing the heat-affected zone on the surrounding material. Consequently, laser welding is an excellent choice for joining even the tiniest components that are challenging to weld using other welding methods.



ADVANTAGES OF SPARTUS® Easy 1500:

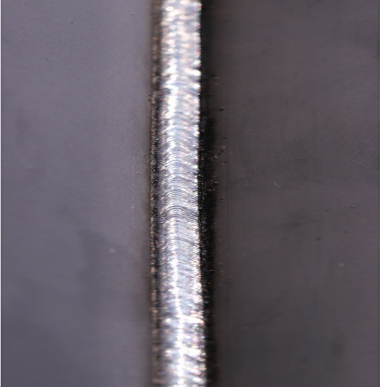
- High precision welding
- Excellent control over the welding process
- Limited material distortion
- Clean welds that require no post-processing
- Application in hard-to-reach areas
- Optimized production time
- Durable and resilient joints
- Capability to join, cut, and clean various materials
- High-class laser source



WIRE FEEDER

The wire feeder for the SPARTUS® Easy 1500 laser welder is a device that precisely delivers welding material to the welding area. This is crucial for controlling welding parameters, improving weld quality, and enhancing process efficiency. It automates the wire feeding, allowing the operator to focus on monitoring the welding process. As a result, the wire feeder is a significant tool in laser welding, especially in industrial production.

WELDING MATERIALS



maximum thickness	
stainless steel:	5mm
galvanized sheet:	4mm
iron:	5mm
mild steel:	4mm
aluminum:	3mm
brass:	2mm



SPARTUS® LASER HEAD F230

The modern laser head allows for focal length adjustment. Additionally, it is equipped with a welding wire feeder mechanism. Ergonomic and user-friendly, it ensures precise and comfortable operation for the operator. Comes with a set of starter nozzles.

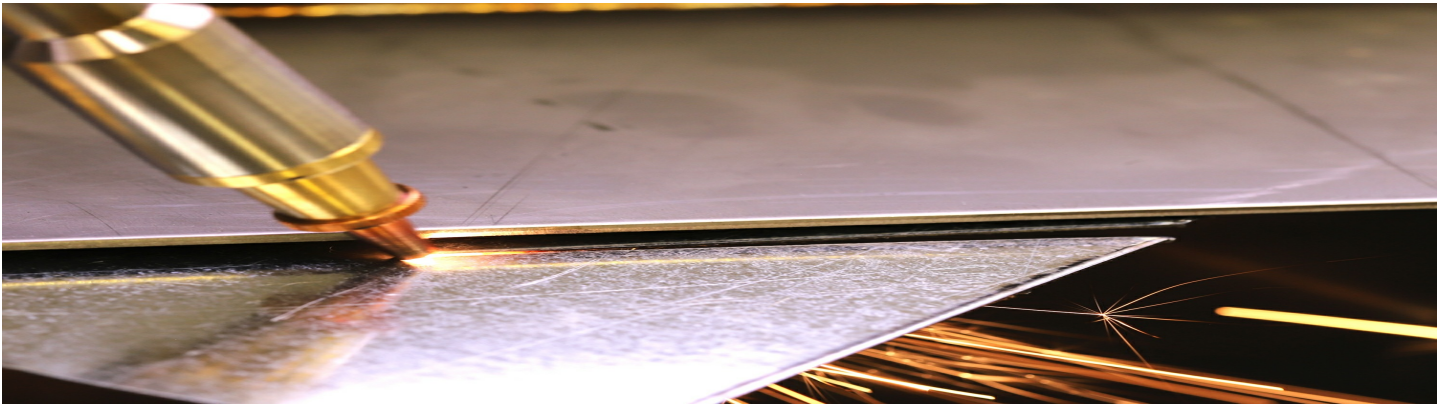
As an option, there's the possibility to switch the F210 head.

ONE DEVICE, MULTIPLE FUNCTIONS

SPARTUS® Easy 1500 is not only used for welding but also for cutting and cleaning various materials.

Laser cutting allows for precise material separation, creating accurate and clean edges without the need for mechanical processing. The cutting function as an additional device option allows cutting stainless steel up to 2mm and carbon steel up to 1.5mm. Copper and aluminum, as materials with a high beam reflection coefficient, should not be subjected to the laser cutting process.

Laser cleaning is an effective method for removing contaminants, paint layers, or rust from material surfaces while preserving their integrity and quality. Thanks to these laser technology applications, we achieve exceptional material processing efficiency with minimal impact on their structure.



MULTILINGUAL MENU

The device interface is available in the following languages: • Polish • English • German • French • Spanish • Italian • Czech • Slovak • Greek • Romanian • Portuguese • Korean • Turkish • Russian

Technical details

Input	~1× 230V ± 10% 50 / 60 Hz
Output power	1500W
Operating mode	continuous / modulation
Cooling type	liquid
Duty cycle	100%
Scanning speed	2 - 6000 mm/s
Scanning width	0 - 6 mm
Frequency	5 - 5000 Hz
Weight	140kg
Dimensions	956 x 580 x 823mm