

SPARTUS®

product code: LASER-EASY1200AIR-PAK1
product ean: 5900391255131



The set includes:

- laser source
- A230 handheld laser head (8,5m) with F150 focus lens
- wire feeder with 1.2 - 1.6V fi37 rollers
- 2x wire guide rollers 0.8 - 1.0V fi37
- insulated steel liner
- teflon liner
- set of single nozzles for the laser head
- 4 single wire feeder tips
- protective lenses

Product variants

Index	Price
SPARTUS Easy 1200AIR laser welding machine with wire feeder LASER-EASY1200AIR-PAK1	€7,380.71 / pc VAT 23% €9,078.27 / pc

Product description

SPARTUS® Easy 1200AIR laser welder - THE BEST MOBILE SOLUTION FOR PRECISE MATERIAL PROCESSING

SPARTUS® Easy 1200AIR laser welder represents the pinnacle of technological innovation, encapsulated in a compact and mobile design. This advanced tool delivers unparalleled precision and speed, elevating the quality of welding, cutting, and cleaning tasks. Equipped with a powerful laser beam concentrated on a minimal area, the **Easy 1200AIR** ensures durable, aesthetically pleasing, and deformation-free welds. By minimizing the heat-affected zone, it significantly reduces the risk of material distortion, making it the perfect solution for even the most delicate materials. Thanks to its lightweight and compact design, the **SPARTUS® Easy 1200AIR** is ideal for use in the field, offering exceptional mobility and convenience in a wide range of settings.

BENEFITS OF THE SPARTUS® Easy 1200AIR LASER WELDER:

- **High welding precision** - the focused laser beam ensures every detail is processed with exceptional accuracy.
- **Control over the welding process** - enables precise management of every stage of welding.
- **Reduced material distortion** - perfect for thin and delicate



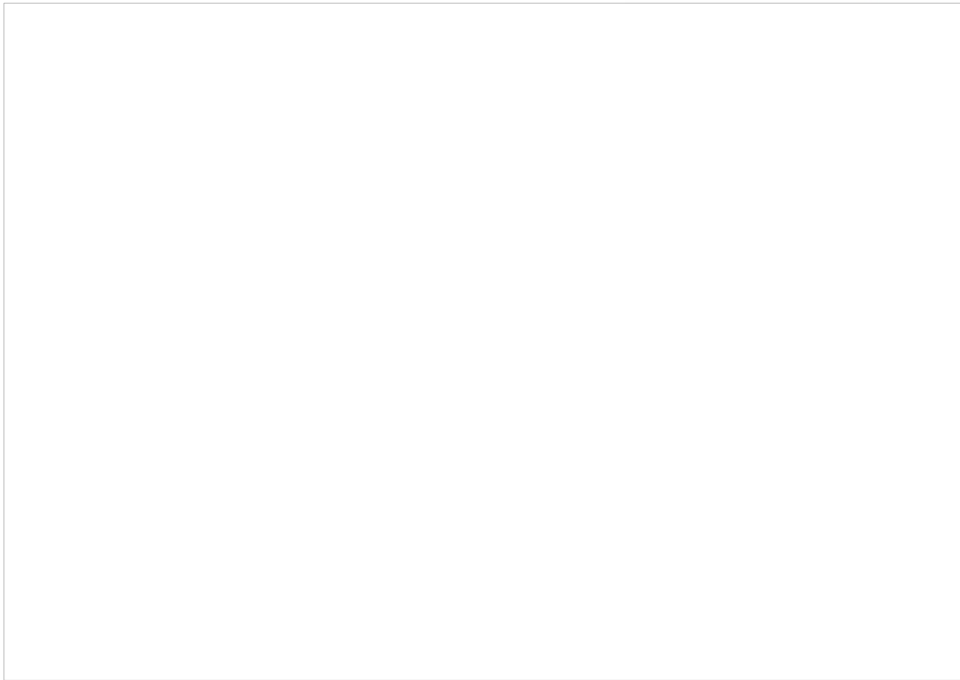
materials.

- **Clean welds with no need for additional processing** - saving time and resources.
- **Access to hard-to-reach areas** - ideal for complex and intricate applications.
- **Optimized production time** - increases work efficiency.
- **Durable and robust connections** - ensures long-lasting and reliable performance.
- **Versatility** - suitable for welding, cutting, and cleaning a wide range of materials.
- **Mobility** - compact dimensions and built-in wheels make the device highly portable, allowing for use in production halls and on-site work.

WIRE FEEDER

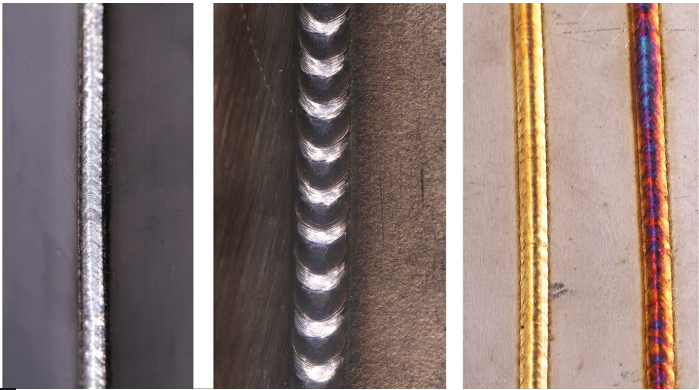
The wire feeder of the **SPARTUS® Easy 1200AIR** laser welder ensures precise and consistent delivery of welding material to the welding area. This feature is essential for maintaining control over welding parameters, enhancing weld quality, and improving process efficiency. By automating wire delivery, it allows the operator to concentrate on supervising the welding process. This makes the wire feeder an indispensable component in laser welding, particularly in industrial production environments.





WELDABLE MATERIALS

Maximum material thickness	
stainless steel:	3mm
carbon steel:	3mm
aluminum:	3mm

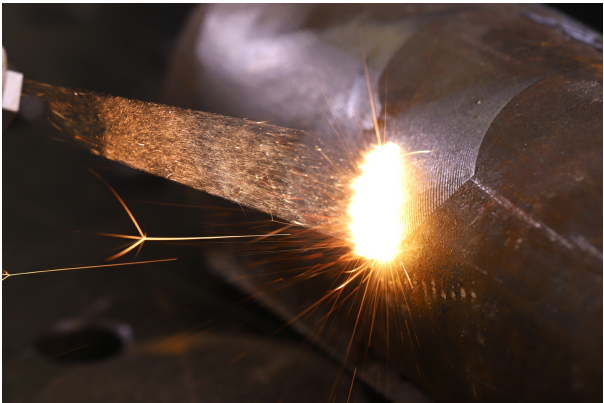
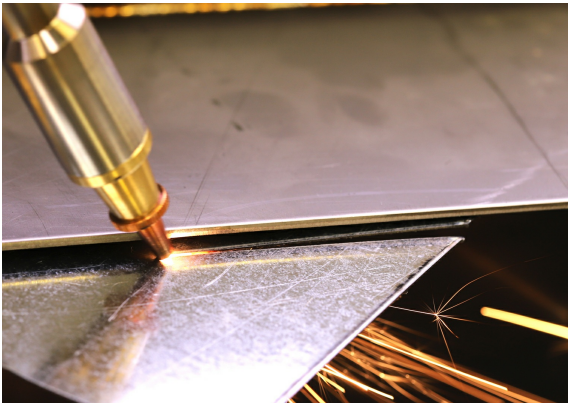


SPARTUS® A230 LASER HEAD

The modern laser head features an adjustable focal length for enhanced versatility. It is also equipped with a wire feeding mechanism for seamless operation. Ergonomically designed and user-friendly, it ensures precise and comfortable work for the operator. Additionally, it comes with a starter pack of nozzles for added convenience.

ONE DEVICE, MANY FUNCTIONS

SPARTUS® Easy 1200AIR is not only a laser welder but also a multifunctional tool enabling cutting and cleaning of surfaces. Using the device allows for a comprehensive approach to material processing, significantly improving work efficiency. Utilizing laser technology for cutting guarantees precision and minimal waste, while the cleaning function removes surface contaminants, preparing it for further technological processes.



Copper and aluminum are materials with a high reflectivity coefficient and should not be subjected to the laser cutting process.

MULTILINGUAL MENU

The device interface is available in the following languages: • Polish • English • German • French • Spanish • Italian • Czech • Slovak • Greek • Romanian • Portuguese • Korean • Turkish • Russian

SPARTUS® Easy 1200AIR is an indispensable tool for professionals who expect the highest quality and versatility in one device. By combining modern technology with robust construction, this welder will meet the expectations of even the most demanding users. It is an excellent solution for industries requiring the utmost precision, such as the automotive,

aerospace, and precision component manufacturing sectors.

Technical details

Input	~1× 230V ± 10% 50 / 60 Hz
Output power	1200W
Operating mode	continuous / modulation
Cooling type	gas
Duty cycle	100%
Scanning speed	2 - 6000 mm/s
Scanning width	0 - 6 mm
Frequency	5 - 5000 Hz
Weight	57kg
Dimensions	730 × 350 × 640mm