

Product details: MAXIMUS 3D 1500 x 1000 x 200 [4 table legs with feet L=350]

product code: SP28N-15-10-350



Product variants

Index

MAXIMUS 3D 1500 x 1000 x 200 [4 table legs with feet L=350]
SP28N-15-10-350

MAXIMUS 3D 1500 x 1000 x 200 [4 table legs with feet L=620]
SP28N-15-10-620

MAXIMUS 3D 1500 x 1000 x 200 [4 table legs with feet L=550]
SP28N-15-10-550

MAXIMUS 3D 1500 x 1000 x 200 [4 table legs with feet L=450]
SP28N-15-10-450

MAXIMUS 3D 1500 x 1000 x 200 [4 table legs with feet L=200]
SP28N-15-10-200

Product description

GUARANTEE YOURSELF CONSTANT SUPPORT WITH MAXIMUS TABLES!

- **S355J2+N NITREDED STEEL**

S355J2+N steel grade used to make the welding table gives high strength, impact and scratch resistance, whereas plasma nitrided welded top significantly enhances protection against corrosion and weld spatter.

- **25mm TABLE TOP**

The table top with a thickness of 25 mm guarantees the durability of the table and resistance to mechanical damage.

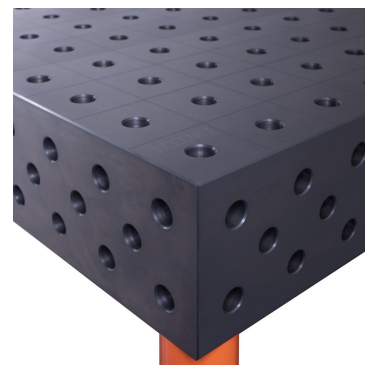
- **MILLIMETRIC SCALE**

The applied millimeter scale facilitates precise assembly of the element to be processed.

- **3D SIDE**

It allows to expand the working surface and joining the table tops.

- **D28 SYSTEM**



Drilled and chamfered holes 28mm.

Technical details

| | |
|----------------------------|--|
| Size of the work surface | 1500 x 1000 x 200mm |
| Made | welded with a protective coating (nitrided) |
| Material | S355J2+N steel acc. to EN 10025-2 |
| Table top thickness | 25mm |
| Table horizontal precision | 0.3/1000mm |
| Table vertical precision | 0.3/200mm |
| Standard | D28 (drilled and milled holes 28mm diameter) |
| Carrying capacity | 2000kg/leg |
| Type of leg | with foot |
| Leg length | 350mm |
| Number of legs | 4pcs. |
| Total table height | 600mm |
| Table top weight | 535kg |