

Product details: MAXIMUS 3D 1500 x 1000 x 200 [4 table legs with feet L=620]

product code: SP28N-15-10-620



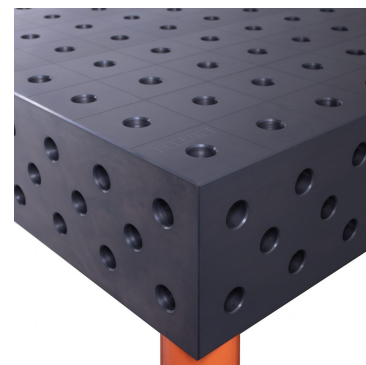
Product variants

Index	Price
MAXIMUS 3D 1500 x 1000 x 200 [4 table legs with feet L=620] SP28N-15-10-620	€2,883.61 / pc Net price
MAXIMUS 3D 1500 x 1000 x 200 [4 table legs with feet L=550] SP28N-15-10-550	€2,883.61 / pc Net price
MAXIMUS 3D 1500 x 1000 x 200 [4 table legs with feet L=450] SP28N-15-10-450	€2,883.61 / pc Net price
MAXIMUS 3D 1500 x 1000 x 200 [4 table legs with feet L=350] SP28N-15-10-350	€2,883.61 / pc Net price
MAXIMUS 3D 1500 x 1000 x 200 [4 table legs with feet L=200] SP28N-15-10-200	€2,883.61 / pc Net price

Product description

GUARANTEE YOURSELF CONSTANT SUPPORT WITH MAXIMUS TABLES!

- **S355J2+N NITREDED STEEL**
S355J2+N steel grade used to make the welding table gives high strength, impact and scratch resistance, whereas plasma nitrided welded top significantly enhances protection against corrosion and weld spatter.
- **25mm TABLE TOP**
The table top with a thickness of 25 mm guarantees the durability of the table and resistance to mechanical damage.
- **MILLIMETRIC SCALE**
The applied millimeter scale facilitates precise assembly of the element to be processed.
- **3D SIDE**
It allows to expand the working surface and joining the table tops.
- **D28 SYSTEM**



Drilled and chamfered holes 28mm.

Technical details

Size of the work surface	1500 x 1000 x 200mm
Made	welded with a protective coating (nitrided)
Material	S355J2+N steel acc. to EN 10025-2
Table top thickness	25mm
Table horizontal precision	0.1/1000mm
Table vertical precision	0.1/200mm
Standard	D28 (drilled and milled holes 28mm diameter)
Carrying capacity	2000kg/leg
Type of leg	with foot
Leg length	620mm
Number of legs	4pcs.
Total table height	870mm
Table top weight	535kg