

Product details: MAXIMUS 3D 2000 x 1000 x 200 [4 table legs with feet L=620]

product code: SP28N-20-10-620



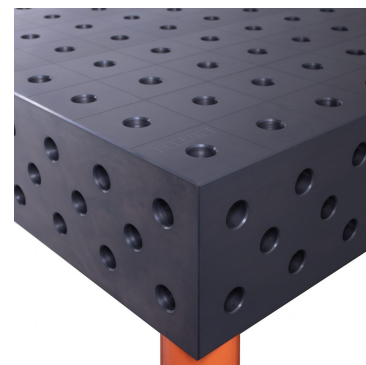
## Product variants

| Index   | Price                              |
|---|------------------------------------|
| <b>MAXIMUS 3D 2000 x 1000 x 200 [4 table legs with feet L=620]</b><br>SP28N-20-10-620 | <b>€3,806.12 / pc</b><br>Net price |
| <b>MAXIMUS 3D 2000 x 1000 x 200 [4 table legs with feet L=550]</b><br>SP28N-20-10-550 | <b>€3,806.12 / pc</b><br>Net price |
| <b>MAXIMUS 3D 2000 x 1000 x 200 [4 table legs with feet L=450]</b><br>SP28N-20-10-450 | <b>€3,806.12 / pc</b><br>Net price |
| <b>MAXIMUS 3D 2000 x 1000 x 200 [4 table legs with feet L=350]</b><br>SP28N-20-10-350 | <b>€3,806.12 / pc</b><br>Net price |
| <b>MAXIMUS 3D 2000 x 1000 x 200 [4 table legs with feet L=200]</b><br>SP28N-20-10-200 | <b>€3,806.12 / pc</b><br>Net price |

## Product description

### GUARANTEE YOURSELF CONSTANT SUPPORT WITH MAXIMUS TABLES!

- **S355J2+N NITREDED STEEL**  
S355J2+N steel grade used to make the welding table gives high strength, impact and scratch resistance, whereas plasma nitrided welded top significantly enhances protection against corrosion and weld spatter.
- **25mm TABLE TOP**  
The table top with a thickness of 25 mm guarantees the durability of the table and resistance to mechanical damage.
- **MILLIMETRIC SCALE**  
The applied millimeter scale facilitates precise assembly of the element to be processed.
- **3D SIDE**  
It allows to expand the working surface and joining the table tops.
- **D28 SYSTEM**



Drilled and chamfered holes 28mm.

## Technical details

|                                   |   |
|-----------------------------------|---|
| <b>Size of the work surface</b>   | <b>2000 x 1000 x 200mm</b>                          |
| <b>Made</b>                       | <b>welded with a protective coating (nitrided)</b>  |
| <b>Material</b>                   | <b>S355J2+N steel acc. to EN 10025-2</b>            |
| <b>Table top thickness</b>        | <b>25mm</b>   |
| <b>Table horizontal precision</b> | <b>0.1/1000mm</b>                                   |
| <b>Table vertical precision</b>   | <b>0.1/200mm</b>                                    |
| <b>Standard</b>                   | <b>D28 (drilled and milled holes 28mm diameter)</b> |
| <b>Carrying capacity</b>          | <b>2000kg/leg</b>                                   |
| <b>Type of leg</b>                | <b>with foot</b>                                    |
| <b>Leg length</b>                 | <b>620mm</b>  |
| <b>Number of legs</b>             | <b>4pcs.</b>  |
| <b>Total table height</b>         | <b>870mm</b>  |
| <b>Table top weight</b>           | <b>720kg</b>  |