

Product details: MAXIMUS 3D 2400 x 1200 x 200 [6 table legs with feet L=620]

product code: SP28N-24-12-620



Product variants

Index

MAXIMUS 3D 2400 x 1200 x 200 [6 table legs with feet L=620]

SP28N-24-12-620

MAXIMUS 3D 2400 x 1200 x 200 [6 table legs with feet L=550]

SP28N-24-12-550

MAXIMUS 3D 2400 x 1200 x 200 [6 table legs with feet L=450]

SP28N-24-12-450

MAXIMUS 3D 2400 x 1200 x 200 [6 table legs with feet L=350]

SP28N-24-12-350

MAXIMUS 3D 2400 x 1200 x 200 [6 table legs with feet L=200]

SP28N-24-12-200

Product description

GUARANTEE YOURSELF CONSTANT SUPPORT WITH MAXIMUS TABLES!

- **S355J2+N NITREDED STEEL**

S355J2+N steel grade used to make the welding table gives high strength, impact and scratch resistance, whereas plasma nitrided welded top significantly enhances protection against corrosion and weld spatter.

- **25mm TABLE TOP**

The table top with a thickness of 25 mm guarantees the durability of the table and resistance to mechanical damage.

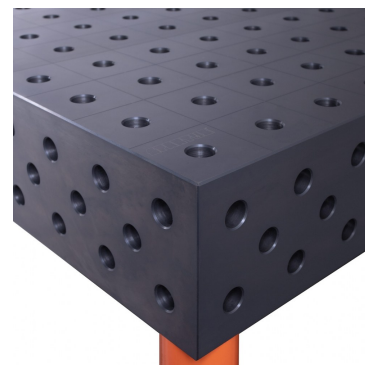
- **MILLIMETRIC SCALE**

The applied millimeter scale facilitates precise assembly of the element to be processed.

- **3D SIDE**

It allows to expand the working surface and joining the table tops.

- **D28 SYSTEM**



Drilled and chamfered holes 28mm.

Technical details

Size of the work surface	2400 x 1200 x 200mm
Made	welded with a protective coating (nitrided)
Material	S355J2+N steel acc. to EN 10025-2
Table top thickness	25mm
Table horizontal precision	0.1/1000mm
Table vertical precision	0.1/200mm
Standard	D28 (drilled and milled holes 28mm diameter)
Carrying capacity	2000kg/leg
Type of leg	with foot
Leg length	620mm
Number of legs	6pcs.
Total table height	870mm
Table top weight	960kg