

Product details: MAXIMUS 3D 2400 x 1200 x 200 [6 table legs with wheels L=620]

product code: SP28N-24-12-620M



## Product variants

### Index

---

**MAXIMUS 3D 2400 x 1200 x 200 [6 table legs with wheels L=620]**

**SP28N-24-12-620M**

---

**MAXIMUS 3D 2400 x 1200 x 200 [6 table legs with wheels L=450]**

**SP28N-24-12-450M**

---

**MAXIMUS 3D 2400 x 1200 x 200 [6 table legs with wheels L=350]**

**SP28N-24-12-350M**

---

**MAXIMUS 3D 2400 x 1200 x 200 [6 table legs with wheels L=200]**

**SP28N-24-12-200M**

## Product description

### GUARANTEE YOURSELF CONSTANT SUPPORT WITH MAXIMUS TABLES!

- **S355J2+N NITREDED STEEL**

S355J2+N steel grade used to make the welding table gives high strength, impact and scratch resistance, whereas plasma nitrided welded top significantly enhances protection against corrosion and weld spatter.

- **25mm TABLE TOP**

The table top with a thickness of 25 mm guarantees the durability of the table and resistance to mechanical damage.

- **MILLIMETRIC SCALE**

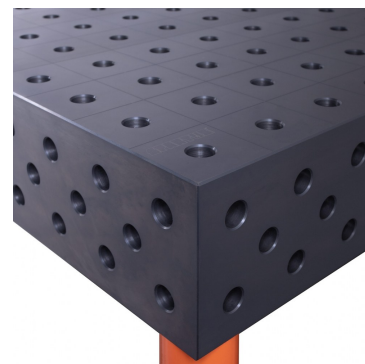
The applied millimeter scale facilitates precise assembly of the element to be processed.

- **3D SIDE**

It allows to expand the working surface and joining the table tops.

- **D28 SYSTEM**

Drilled and chamfered holes 28mm.



## Technical details

<b>Size of the work surface</b>	<b>2400 x 1200 x 200mm</b>
<b>Made</b>	<b>welded with a protective coating (nitrided)</b>
<b>Material</b>	<b>S355J2+N steel acc. to EN 10025-2</b>
<b>Table top thickness</b>	<b>25mm</b>
<b>Table horizontal precision</b>	<b>0.3/1000mm</b>
<b>Table vertical precision</b>	<b>0.3/200mm</b>
<b>Standard</b>	<b>D28 (drilled and milled holes 28mm diameter)</b>
<b>Carrying capacity</b>	<b>2000kg/leg</b>
<b>Type of leg</b>	<b>with a wheel</b>
<b>Leg length</b>	<b>620mm</b>
<b>Number of legs</b>	<b>6pcs.</b>
<b>Total table height</b>	<b>940mm</b>
<b>Table top weight</b>	<b>960kg</b>