

Product details: MAXIMUS 3D 3000 x 1500 x 200 [6 table legs with feet L=450]

product code: SP28N-30-15-450



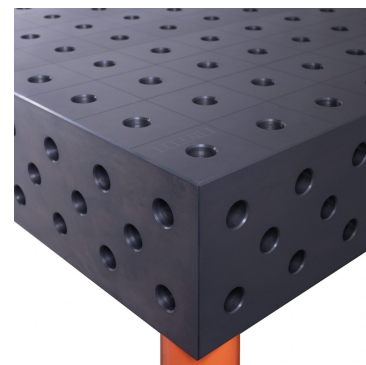
## Product variants

Index	Price
<b>MAXIMUS 3D 3000 x 1500 x 200 [6 table legs with feet L=450]</b> SP28N-30-15-450	<b>€6,990.29 / pc</b> Net price
<b>MAXIMUS 3D 3000 x 1500 x 200 [6 table legs with feet L=620]</b> SP28N-30-15-620	<b>€6,990.29 / pc</b> Net price
<b>MAXIMUS 3D 3000 x 1500 x 200 [6 table legs with feet L=550]</b> SP28N-30-15-550	<b>€6,990.29 / pc</b> Net price
<b>MAXIMUS 3D 3000 x 1500 x 200 [6 table legs with feet L=350]</b> SP28N-30-15-350	<b>€6,990.29 / pc</b> Net price
<b>MAXIMUS 3D 3000 x 1500 x 200 [6 table legs with feet L=200]</b> SP28N-30-15-200	<b>€6,990.29 / pc</b> Net price

## Product description

### GUARANTEE YOURSELF CONSTANT SUPPORT WITH MAXIMUS TABLES!

- **S355J2+N NITREDED STEEL**  
S355J2+N steel grade used to make the welding table gives high strength, impact and scratch resistance, whereas plasma nitrided welded top significantly enhances protection against corrosion and weld spatter.
- **25mm TABLE TOP**  
The table top with a thickness of 25 mm guarantees the durability of the table and resistance to mechanical damage.
- **MILLIMETRIC SCALE**  
The applied millimeter scale facilitates precise assembly of the element to be processed.
- **3D SIDE**  
It allows to expand the working surface and joining the table tops.
- **D28 SYSTEM**



Drilled and chamfered holes 28mm.

## Technical details

<b>Size of the work surface</b>	<b>3000 x 1500 x 200mm</b>
<b>Made</b>	<b>welded with a protective coating (nitrided)</b>
<b>Material</b>	<b>S355J2+N steel acc. to EN 10025-2</b>
<b>Table top thickness</b>	<b>25mm</b>
<b>Table horizontal precision</b>	<b>0.3/1000mm</b>
<b>Table vertical precision</b>	<b>0.3/200mm</b>
<b>Standard</b>	<b>D28 (drilled and milled holes 28mm diameter)</b>
<b>Carrying capacity</b>	<b>2000kg/leg</b>
<b>Type of leg</b>	<b>with foot</b>
<b>Leg length</b>	<b>450mm</b>
<b>Number of legs</b>	<b>6pcs.</b>
<b>Total table height</b>	<b>700mm</b>
<b>Table top weight</b>	<b>1500kg</b>
<b>Input</b>	<b>-</b>