

Product details: MAXIMUS 3D 2400 x 1200 x 200 [6 table legs with feet L=550]

product code: SP28N-24-12-550



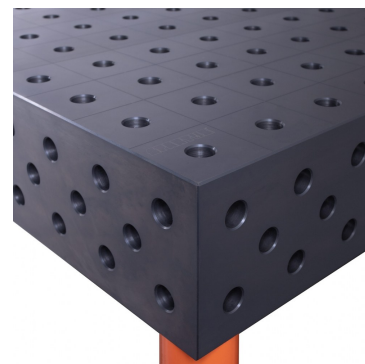
Product variants

Index	Price
MAXIMUS 3D 2400 x 1200 x 200 [6 table legs with feet L=550] SP28N-24-12-550	€4,877.43 / pc Net price
MAXIMUS 3D 2400 x 1200 x 200 [6 table legs with feet L=450] SP28N-24-12-450	€4,877.43 / pc Net price
MAXIMUS 3D 2400 x 1200 x 200 [6 table legs with feet L=350] SP28N-24-12-350	€4,877.43 / pc Net price
MAXIMUS 3D 2400 x 1200 x 200 [6 table legs with feet L=200] SP28N-24-12-200	€4,877.43 / pc Net price

Product description

GUARANTEE YOURSELF CONSTANT SUPPORT WITH MAXIMUS TABLES!

- **S355J2+N NITREDED STEEL**
S355J2+N steel grade used to make the welding table gives high strength, impact and scratch resistance, whereas plasma nitrided welded top significantly enhances protection against corrosion and weld spatter.
- **25mm TABLE TOP**
The table top with a thickness of 25 mm guarantees the durability of the table and resistance to mechanical damage.
- **MILLIMETRIC SCALE**
The applied millimeter scale facilitates precise assembly of the element to be processed.
- **3D SIDE**
It allows to expand the working surface and joining the table tops.
- **D28 SYSTEM**
Drilled and chamfered holes 28mm.



Technical details

Size of the work surface	2400 x 1200 x 200mm
Made	welded with a protective coating (nitrided)
Material	S355J2+N steel acc. to EN 10025-2
Table top thickness	25mm
Table horizontal precision	0.1/1000mm
Table vertical precision	0.1/200mm
Standard	D28 (drilled and milled holes 28mm diameter)
Carrying capacity	2000kg/leg
Type of leg	with foot
Leg length	550mm
Number of legs	6pcs.
Total table height	800mm
Table top weight	960kg
Input	-