

Product details: FERROS 3D 1400 x 1400 x 200
octagonal with rotary positioner SPARTUS® 2000

product code: SP28C-14-14-RP2000

Completion date to be agreed with the sales manager



Product variants

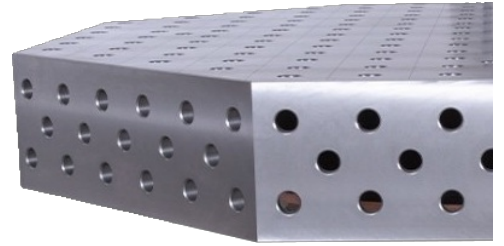
Index	Price
FERROS 3D 1400 x 1400 x 200 octagonal with rotary positioner SPARTUS® 2000 SP28C-14-14-RP2000	€18,409.52 / pc Net price
FERROS 3D 1400 x 1400 x 200 octagonal with rotary positioner SPARTUS® 1000 SP28C-14-14-RP1000	€14,600.00 / pc Net price
FERROS 3D 1400 x 1400 x 200 octagonal with rotary positioner SPARTUS® 5000 SP28C-14-14-RP5000	€31,853.97 / pc Net price

Product description

INCREASE WORK EFFICIENCY THANKS TO MODERN SOLUTIONS!

FERROS

1400 x 1400 x 200mm (octagonal)



- **CAST IRON ENGJL-300**

For the casting of the countertop, high-strength cast iron EN-GJL-300 was used, which is characterized by high wear resistance.

- **TABLE TOP 25MM**

The table top with a thickness of 25 mm guarantees the durability of the table and resistance to mechanical damage.

- **MILLIMETRIC SCALE**

The applied millimeter scale facilitates precise installation of the element during processing.

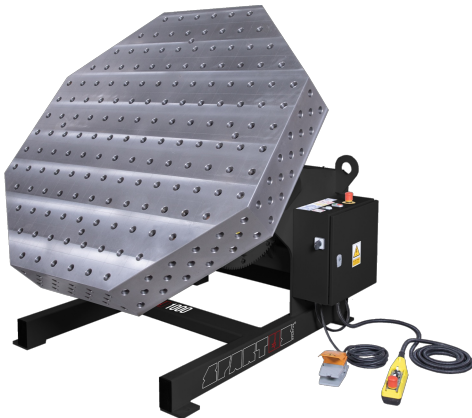
- **3D SIDE**

It allows to expand the working surface and joining the table tops.

- **D28 SYSTEM**

Drilled and chamfered holes 28mm.

SPARTUS® welding positioners with a countertop size of 1400 x 1400 x 200.

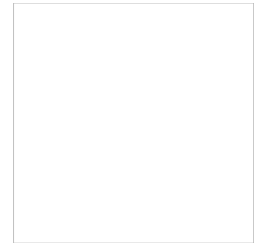
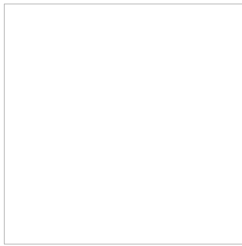
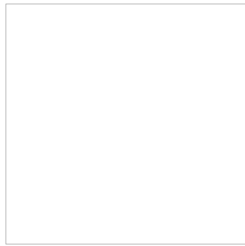


The table with a positioner allows for adjusting the workstation position according to the worker's needs. The positioner provides the ability to rotate the worktable with variable speed in both directions and change the angle of the main frame. Control is achieved through a foot pedal. The self-locking drive ensures that the rotating disc halts in any position. The positioner's mechanisms enable rotation around its own axis and deviation of the rotator up to 140° from the horizontal, while the tilt angle after mounting the tabletop is 90°. Control interface: manual panel + foot pedal (on separate cables).

Advantages:

- rotating worktable (in both directions)
- tilt angle adjustment
- smooth speed adjustment
- intuitive and convenient control

ACCESSORY SETS



Accessories SET 1 includes:

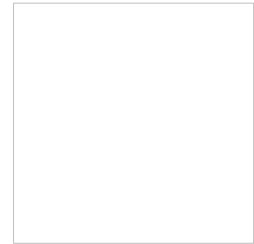
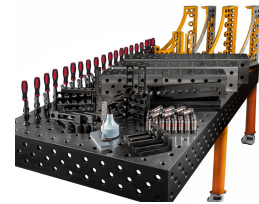
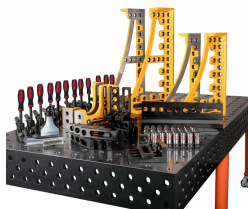
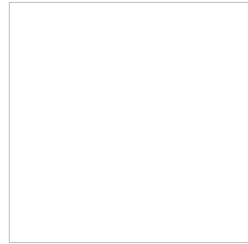
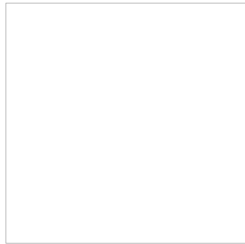
- SP010-30-005 Angle Bracket 175x50x75mm hole/slot 8 pcs
- SP010-50-002 Universal stopper 225x50x25mm 4 pcs
- SP010-70-001 180° mounting clamp with 300x300mm holder 6 pcs
- SP010-60-001 Rapid locking bolt fi 28x50mm 22 pcs
- SP010-90-003A Hexagon allen wrench 150mm 1 pc.
- SP010-90-004 Nylon bruschi fi 30x80mm 1 pc.
- SP010-90-001 Oilstone 200x50x25mm 1 pc.
- SP010-90-002 1l dispenser bottle 1 pc.

Accessories SET 2 includes:

- SP010-30-002 Angle bracket 175x50x175mm hole/slot 6 pcs
- SP010-30-005 Angle bracket 175x50x75mm hole/slot 2 pcs
- SP010-50-002 Universal stopper 225x50x25mm 4 pcs
- SP010-70-001 180° mounting clamp with 300x300mm holder 8 pcs
- SP010-60-001 Rapid locking bolt fi 28x50mm 20 pcs
- SP010-90-003A Hexagon allen wrench 150mm 1 pc.
- SP010-90-004 Nylon bruschi fi 30x80mm 1 pc.
- SP010-90-001 Olistone 200x50x25mm 1 pc.
- SP010-90-002 1l dispenser bottle 1 pc.

Accessories SET 3 includes:

- SP010-23-300L Angle bracket 275x100x300mm left 1 pc.
- SP010-23-300R Angle bracket 275x100x300mm right 1 pc.
- SP010-23-600L Angle bracket 375x100x600mm left 1 pc.
- SP010-23-600R Angle bracket 375x100x600mm right 1 pc.
- SP010-30-002 Angle bracket 175x50x175mm hole/slot 4 pcs
- SP010-30-005 Angle bracket 175x50x75mm hole/slot 4 pcs
- SP010-50-002 Universal stopper 225x50x25mm 6 pcs
- SP010-70-001 180° mounting clamp with 300x300mm holder 10 pcs
- SP010-60-001 Rapid locking bolt fi 28x50mm 22 pcs
- SP010-90-003A Hexagon allen wrench 150mm 1 pc.
- SP010-90-004 Nylon brush fi 30x80mm 1 pc.
- SP010-90-001 Oilstone 200x50x25mm 1 pc.
- SP010-90-002 1l dispenser bottle 1 pc.



Accessories SET 4 includes:

SP010-23-600L Angle bracket 375x100x600mm left 2 pcs
SP010-23-600R Angle bracket 375x100x600mm right 2 pcs
SP010-30-005 Angle bracket 175x50x75 hole/slot 4 pcs
SP010-30-013 Angle bracket 175x50x275mm hole/slot 6 pcs
SP010-50-002 Universal stopper 225x50x25mm 4 pcs
SP010-65-001A Prysm fi 60 90° 4 pcs
SP010-70-001 180° mounting clamp with 300x300mm holder 10 pcs
SP010-60-001 Rapid locking bolt fi 28x50mm 28 pcs
SP010-90-003A Hexagon allen wrench 150mm 1 pc.
SP010-90-004 Nylon bruschi fi 30x80mm 1 pc.
SP010-90-001 Oilstone 200x50x25mm 1 pc.
SP010-90-002 1l dispenser bottle 1 pc.

Accessories SET 5 includes:

SP010-23-300L Angle bracket 275x100x300mm left 1 pc.
SP010-23-300R Angle bracket 275x100x300mm right 1 pc.
SP010-23-600L Angle bracket 375x100x600mm left 1 pc.
SP010-23-600R Angle bracket 375x100x600mm right 1 pc.
SP010-23-800L Angle bracket 375x100x800mm left 1 pc.
SP010-23-800R Angle bracket 375x100x800mm right 1 pc.
SP010-30-002 Angle bracket 175x50x175mm hole/slot 6 pcs
SP010-30-005 Angle bracket 175x50x75 hole/slot 4 pcs
SP010-50-002 Universal stopper 225x50x25mm 6 pcs
SP010-50-014 Universal stop 500x100x25mm hole/slot 4 pcs
SP010-70-001 180° mounting clamp with 300x300mm holder 12 pcs
SP010-60-001 Rapid locking bolt fi 28x50mm 40 pcs
SP010-90-003A Hexagon allen wrench 150mm 1 pc.
SP010-90-004 Nylon bruschi fi 30x80mm 1 pc.
SP010-90-001 Oilstone 200x50x25mm 1 pc.
SP010-90-002 1l dispenser bottle 1 pc.

Accessories SET 6 includes:

SP010-20-050 U-shape block 500x200x200mm 2 pcs
SP010-20-100 U-shape block 1000x200x200mm 2 pcs
SP010-23-300L Angle bracket 275x100x300mm left 2 pcs
SP010-23-300R Angle bracket 275x100x300mm right 2 pcs
SP010-23-600L Angle bracket 375x100x600mm left 2 pcs
SP010-23-600R Angle bracket 375x100x600mm right 2 pcs
SP010-30-002 Angle bracket 175x50x175mm hole/slot 8 pcs
SP010-30-005 Angle bracket 175x50x75mm hole/slot 8 pcs
SP010-30-013 Angle bracket 175x50x275mm hole/slot 4 pcs
SP010-50-002 Universal stopper 225x50x25mm 8 pcs
SP010-50-014 Universal stop 500x100x25mm hole/slot 4 pcs
SP010-70-001 180° mounting clamp with 300x300mm holder 20 pcs
SP010-60-001 Rapid locking bolt fi 28x50mm 46 pcs
SP010-90-003A Hexagon allen wrench 150mm 1 pc.
SP010-90-004 Nylon bruschi fi 30x80mm 1 pc.
SP010-90-001 Oilstone 200x50x25mm 1 pc.
SP010-90-002 1l dispenser bottle 1 pc.

Technical details

Size of the work surface	1400 x 1400 x 200mm
Made	casted
Material	EN-GJL-300 cast iron acc. to EN 1561
Table top thickness	25mm
Table horizontal precision	0.1/1000mm
Table vertical precision	0.1/200mm
Standard	D28 (drilled and milled holes 28mm diameter)
Supporting structure	Positioner
Carrying capacity	1000kg/positioner
Carrying capacity with tabletop	350kg
Total table height	1090mm
Table top weight	650kg
Total weight	1210kg